

*Newheek*

---

# X Ray Hand Switch —— Type L05

**Newheek**

**Professional  
X Ray Machine  
Accessories Producer**

Website : [www.xrayswitch.com](http://www.xrayswitch.com)

Email : [info@xrayswitch.com](mailto:info@xrayswitch.com)

Service Line : +86 536 8882360

## Quick Details

Properties: Medical X-ray Equipments & Accessories  
Brand Name: Newheek  
Product Name: X-ray exposure hand switch  
Model Number: L05  
Place of Origin: Shandong, China (Mainland)  
Application: x ray machine  
Type : step 1 control exposure  
Function :One step to control dental x ray expose)  
LED : YES  
Current: 3A  
Housing materials: ABS plastic  
Operation voltage: 125v  
Standard core: 2 core  
Length: 3m 6m 10m  
Mechanical life: 1,000,000 times  
Electric life: 200,000 times  
Structure: omron inner switch  
Customization:Available

## Product Application

### **Applicable to x-ray exposure of radiography or fluoroscopy equipment**

X ray hand exposure hand switch is mainly used on portable x ray, mobile x ray, stationary x ray, analog x ray, digital x ray, radiography x ray etc x ray equipment.

As well as it is applicable to beauty laser device, healthy recovery device etc field.

## HighLight

- Streamline design outlook, comfortable handle.
- Housing adopt ABC engineering plastic, anti-shock and fire retardant.
- Inner adopt OMRON micro switch, high sensitivity.
- Mechanical life of 1,000,000 times above.
- Electrical life of 200,000 times above.

### ***Weifang Newheek Medical Image Equipment Co., Ltd.***

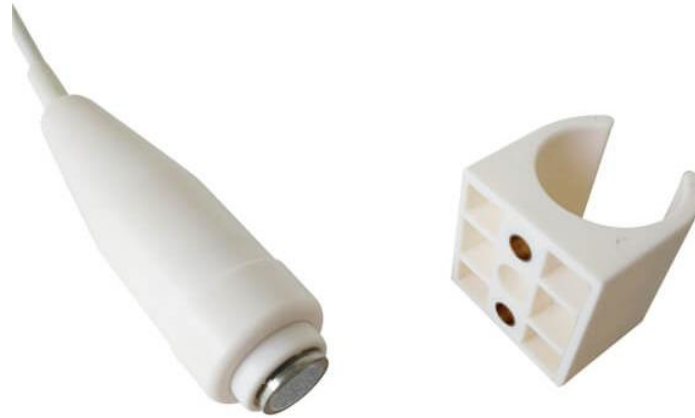
*Add: No. 1 Factory Building of No.13426 of Yuqing East Street, Weifang, Shandong, China.*

*Website: [www.xrayswitch.com](http://www.xrayswitch.com)*

*Tel: 86 536 8882360*

*Email: [info@xrayswitch.com](mailto:info@xrayswitch.com)*

Detail diagram



Picture of **Handle and cradle**



Picture of **Button (with LED)**

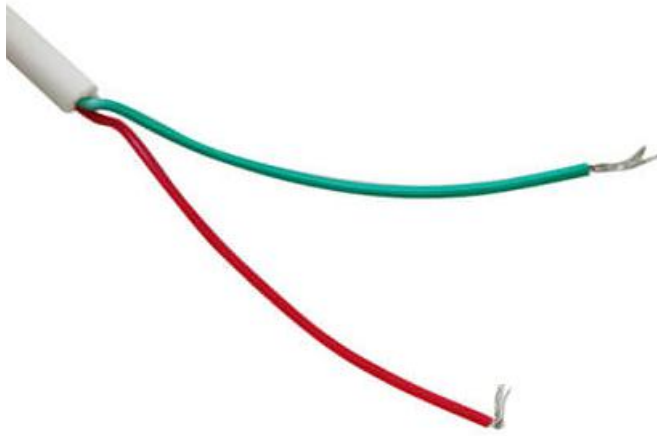
***Weifang Newheek Medical Image Equipment Co., Ltd.***

Add: No. 1 Factory Building of No.13426 of Yuqing East Street, Weifang, Shandong, China.

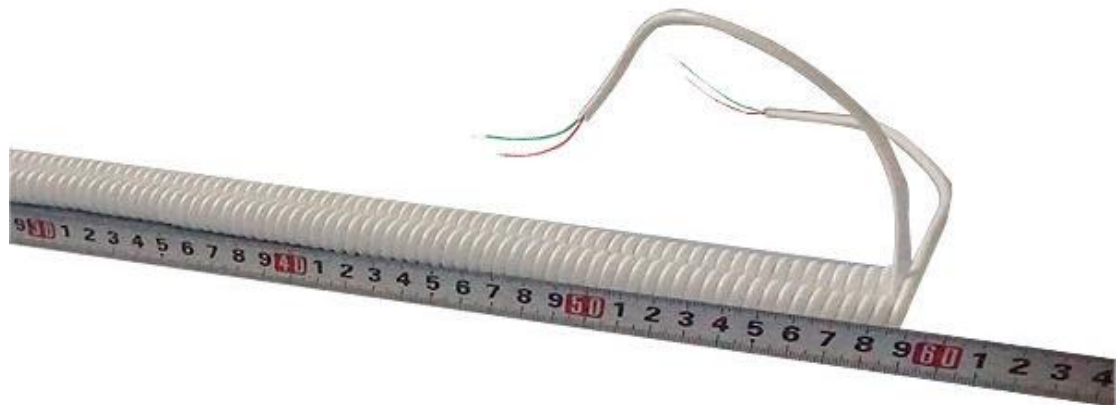
Website: [www.xrayswitch.com](http://www.xrayswitch.com)

Tel: 86 536 8882360

Email: [info@xrayswitch.com](mailto:info@xrayswitch.com)



Picture of **2-core**



Picture of **6m-wire** (60cm spring coil wire)

***Weifang Newheek Medical Image Equipment Co., Ltd.***

Add: No. 1 Factory Building of No.13426 of Yuqing East Street, Weifang, Shandong, China.

Website: [www.xrayswitch.com](http://www.xrayswitch.com)

Tel: 86 536 8882360

Email: [info@xrayswitch.com](mailto:info@xrayswitch.com)

**Technical Features**

Operation Voltage	Current	Housing Material	Hand Switch Cable Core	
			Red	Green
125V	3A	white, ABS plastic	1 Step	
Ambient Temperature		Relative Humidity	Atmospheric Pressure	LED
-20°C-70°C		≤ 93%	50-106kPa	yes

**Configuration:**

Standard	2-core, 3m-wire
Customized	2-core, 6m or 10m wire
	Other requirement

**Our Service**

**Original manufacturer of x- ray machine accessories hand switch and foot switch for more than 16 years.**

- √ Customers could find all kinds of x-ray machine parts here.
- √ Offer on line technological support.
- √ Promise super product quality with best price and service.
- √ Support the third part inspection before delivery.
- √ Ensure the shortest delivery time.

***Weifang Newheek Medical Image Equipment Co., Ltd.***

Add: No. 1 Factory Building of No.13426 of Yuqing East Street, Weifang, Shandong, China.

Website: [www.xrayswitch.com](http://www.xrayswitch.com)

Tel: 86 536 8882360

Email: [info@xrayswitch.com](mailto:info@xrayswitch.com)

## Contact us

Email : [info@xrayswitch.com](mailto:info@xrayswitch.com)

Hot Line: +86 536 8882360

The common problems on the **hand switch L05**

## FAQ

1. Can you accept customize hand switch?

Yes. Please feel free to send us your detail requirement by email here.  
You will get our reply in 24 hours.

2. Can we print our logo/website/company name on products?

Yes, please advise the size and Pantone Code of the logo.

3. What's the lead time for regular order?

3-5 days for order quantity lower than 100pc hand switch; For more quantity, usually 15 days.

4. Can I get a discount?

Yes, for the order quantity more than 50 pcs hand switch, please contact us to get the best price.

5. What is the quality warranty?

We offer 12 months warranty after the hand switch is delivered.

***Weifang Newheek Medical Image Equipment Co., Ltd.***

*Add: No. 1 Factory Building of No.13426 of Yuqing East Street, Weifang, Shandong, China.*

*Website: [www.xrayswitch.com](http://www.xrayswitch.com)*

*Tel: 86 536 8882360*

*Email: [info@xrayswitch.com](mailto:info@xrayswitch.com)*



Certificate EMC

Certificate of Conformity

Certificate Number: B-E16029006  
EMC Directive 2014/30/EU



Holder.....: Weifang Newheek Electronic Technology Co.,Ltd.  
Address.....: The North 2nd Floor of No.1 Factory Building of No.13426 Yuqing East Street, Hi-Tech Industrial Development Zone, Weifang, Shandong, China  
Manufacturer.....: Same As Holder  
Product.....: Hand Switch  
Model No.....: XC-01, XC-02, XC-03, XC-04, L01, L02, L03, L04, L05, L06, L07, L08, L09, L10  
Technical Data.....: AC 110-240V~, 10A / DC 30V, 5A

The submitted products have been tested by us with the following standard(s) and found to be in compliance with the listed European Directives.

- EN 61000-6-3:2007+A1:2011;
- EN 61000-6-1:2007;
- EN 61000-3-2:2006+A1:2009+A2:2009;
- EN 61000-3-3:2013

The test results apply only to the particular sample tested and to the specific tests carried out. Technical Report and documentation are at the Holder's disposal.

This certificate applies specifically to the sample investigated in our test reference number only. The CE markings as shown below can be affixed on the product after preparation of necessary technical documentation. Other relevant Directives have to be observed.



*[Signature]*

Certification Manager  
Date: Feb. 24, 2016



Company No.07113834



Beide (UK) Product Service Limited

U.K.: Flat 107, 25 Indecon Square, London, United Kingdom  
China: 6F, Bldg E, Hourui 3rd Ind Zone, Xixiang, Bao'an Dist, Shenzhen, China  
Http://www.szbeide.com E-mail: admin@szbeide.com

Weifang Newheek Medical Image Equipment Co., Ltd.

Add: No. 1 Factory Building of No.13426 of Yuqing East Street, Weifang, Shandong, China.  
Website: [www.xrayswitch.com](http://www.xrayswitch.com) Tel: 86 536 8882360 Email: [info@xrayswitch.com](mailto:info@xrayswitch.com)

Certificate ROHS

Certificate of Conformity

Certificate Number: B-R16029007  
RoHS Directive 2011/65/EU




Holder.....: Weifang Newheek Electronic Technology Co.,Ltd.  
Address.....: The North 2nd Floor of No.1 Factory Building of No.13426 Yuqing East Street, Hi-Tech Industrial Development Zone, Weifang, Shandong, China  
Manufacturer.....: Same As Holder  
Product.....: Hand Switch  
Model No.....: XC-01, XC-02, XC-03, XC-04, L01, L02, L03, L04, L05, L06, L07, L08, L09, L10

The submitted products have been tested by us and found to be in compliance with the listed European Directives.

The test results apply only to the particular sample tested and to the specific tests carried out. Technical Report and documentation are at the Holder's disposal.

This certificate applies specifically to the sample investigated in our test reference number only. The CE markings as shown below can be affixed on the product after preparation of necessary technical documentation. Other relevant Directives have to be observed.



  
Certification Manager  
Date: Feb. 24, 2016



Company No. 07113834



Beide (UK) Product Service Limited

U.K.: Flat 107, 25 Indecon Square, London, United Kingdom  
China: 6F, Bldg E, Hourui 3rd Ind Zone, Xixiang, Bao'an Dist, Shenzhen, China  
Http://www.szbeide.com E-mail: admin@szbeide.com

Weifang Newheek Medical Image Equipment Co., Ltd.

Add: No. 1 Factory Building of No.13426 of Yuqing East Street, Weifang, Shandong, China.  
Website: [www.xrayswitch.com](http://www.xrayswitch.com) Tel: 86 536 8882360 Email: [info@xrayswitch.com](mailto:info@xrayswitch.com)